

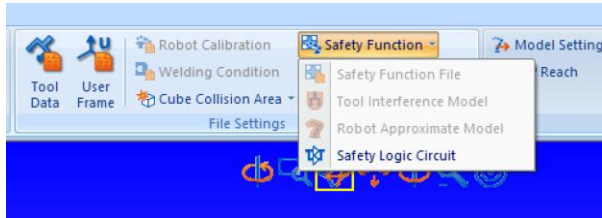
Turn on FSU in Motosim VRC

Introduction

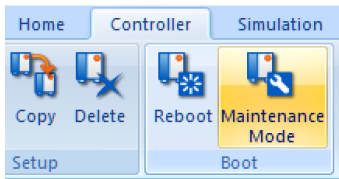
This document is a simple, visual walk-through of activating Functional Safety (FSU) in MotosimEG VRC.

Workflow

In any new simulation or many existing simulations Functional Safety will not be active. Note how the Functional Safety icons, in the Controller Tab, are grayed out.



1. In the Controller Tab go into MAINTENANCE MODE

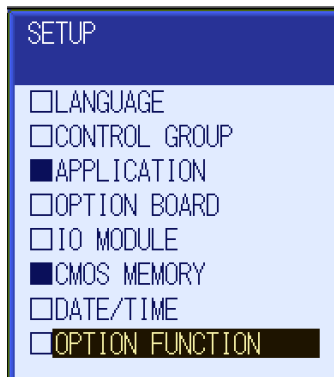


This document captures ideas, experiences, and informal recommendations from the Yaskawa Partner Support team. It is meant to augment – not supersede manuals or documentation from motoman.com. Please contact the Partner Support team at partnersupport@motoman.com for updates or clarification.

2. In the Virtual Pendant Select SYSTEM/SETUP



3. Cursor to OPTION FUNCTION and Select it



This document captures ideas, experiences, and informal recommendations from the Yaskawa Partner Support team. It is meant to augment – not supersede manuals or documentation from motoman.com. Please contact the Partner Support team at partnersupport@motoman.com for updates or clarification.

4. Cursor to FUNCTIONAL SAFETY and Select

OPTION FUNCTION	
<input type="checkbox"/> 015 RELATIVE JOB	NOT USED
<input type="checkbox"/> 017 TCP	NOT USED
<input type="checkbox"/> 018 MACRO INST.	NOT USED
<input type="checkbox"/> 020 I/F PANEL	NOT USED
<input type="checkbox"/> 025 EXTERNAL REFERENCE POINT	NOT USED
<input type="checkbox"/> 026 PARALLEL START INSTRUCTION	0
<input type="checkbox"/> 027 COORDINATED INSTRUCTION	NOT USED
<input type="checkbox"/> 028 STATION ANGLE DISPLAY	NOT USED
<input type="checkbox"/> 030 LIMITS CUSTOMIZATION	DETAIL
<input type="checkbox"/> 032 TOOL NO. SWITCHING	NOT USED
<input type="checkbox"/> 033 SI UNIT INDICATION	NOT USED
<input type="checkbox"/> 034 DISPLAY IO NAME IN JOB	NOT USED
<input type="checkbox"/> 037 VARIABLE ALLOCATION	DETAIL
<input type="checkbox"/> 049 Functional safety	DETAIL
<input type="checkbox"/> 055 SAFETY LOGICAL CIRCUIT SETTING	DETAIL

5. Change FUNCTIONAL SAFETY to USED and cursor down to CONNECTION SETTING

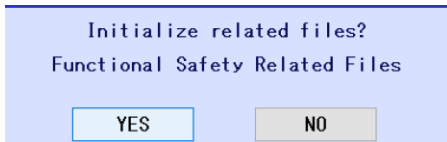
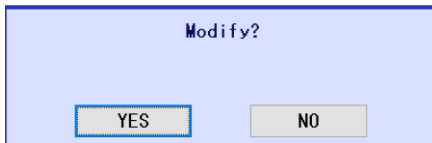
Functional safety [Function setting]	
Functional safety	USED
Connection setting	DETAIL
Speed Limit(DelayTimeInitVal)	ENABLE
Tool change monitor/Tool number select	NOT USED

This document captures ideas, experiences, and informal recommendations from the Yaskawa Partner Support team. It is meant to augment – not supersede manuals or documentation from motoman.com. Please contact the Partner Support team at partnersupport@motoman.com for updates or clarification.

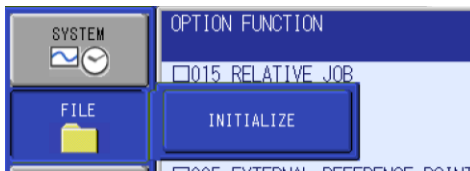
6. Make sure the CONNECTION SETTING F-SAFE BOARD is set to USED



7. ENTER and confirm the modification (Select **YES** to overwrite existing FSU data...Select **NO** to preserve existing FSU data)

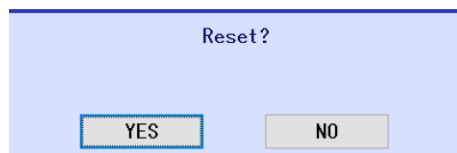
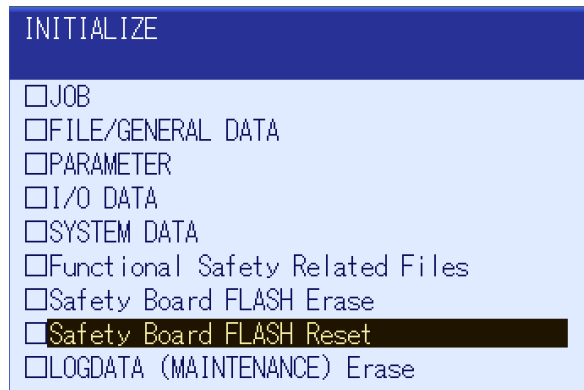


8. Select FILE / INITIALIZE

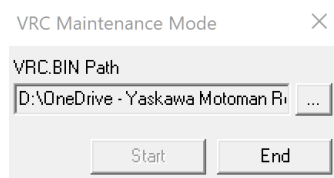


This document captures ideas, experiences, and informal recommendations from the Yaskawa Partner Support team. It is meant to augment – not supersede manuals or documentation from motoman.com. Please contact the Partner Support team at partnersupport@motoman.com for updates or clarification.

9. Select “Functional Safety Board FLASH Reset” and CONFIRM the Reset



10. Select END on the other window



This document captures ideas, experiences, and informal recommendations from the Yaskawa Partner Support team. It is meant to augment – not supersede manuals or documentation from motoman.com. Please contact the Partner Support team at partnersupport@motoman.com for updates or clarification.

Once rebooted, to access the Functional Safety in the pendant, change the controller's security mode to SAFETY

1. On the controller select system info/security



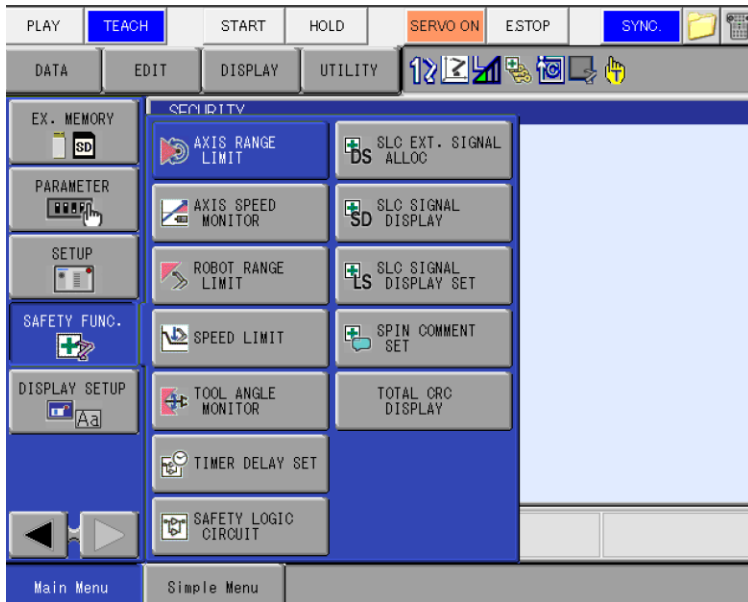
2. Change from MANAGEMENT to SAFETY and enter 555555555



This document captures ideas, experiences, and informal recommendations from the Yaskawa Partner Support team. It is meant to augment – not supersede manuals or documentation from motoman.com. Please contact the Partner Support team at partnersupport@motoman.com for updates or clarification.

Results

Now, when using the virtual pendant, the Safety Func. Section is fully exposed.



Also the Safety Function Menu, in the Controller Tab, is available.

